

# B&C JOURNAL

Brink&Campman rug collections 2020 | 2021



BRINK&CAMPMAN



THE ORIGINAL  
**MORRIS & CO**  
FOUNDED BY WILLIAM MORRIS IN 1861

**Sanderson**

HARLEQUIN

**scion**

*Florence Broadhurst*

**TED BAKER**  
LONDON

**WEDGWOOD**  
— HOME —

bluebellgray



WELCOME TO THE 2020 | 2021 ISSUE OF

## RUG COLLECTIONS BY BRINK&CAMPMAN

In these strange times, with a lot of uncertainties, we at Brink&Campman want to give you a positive burst of inspiration with this Journal.

It will bring you the stories of our newest additions and will give you ideas and inspiration for creating a beautiful and personal home.

The new Brink&Campman Rug collection is serene and durable, designed to convey our company's biggest strengths. Designed and made in our own factory in the Netherlands. With natural materials, woven into sumptuous textures or patterned in a bold yet chic manner. Being photographed on beautiful locations these new additions to our collection could not have represented Brink&Campman in a better way.

Enjoy!

For more inspiration check our website  
[brinkandcampman.com](https://brinkandcampman.com)

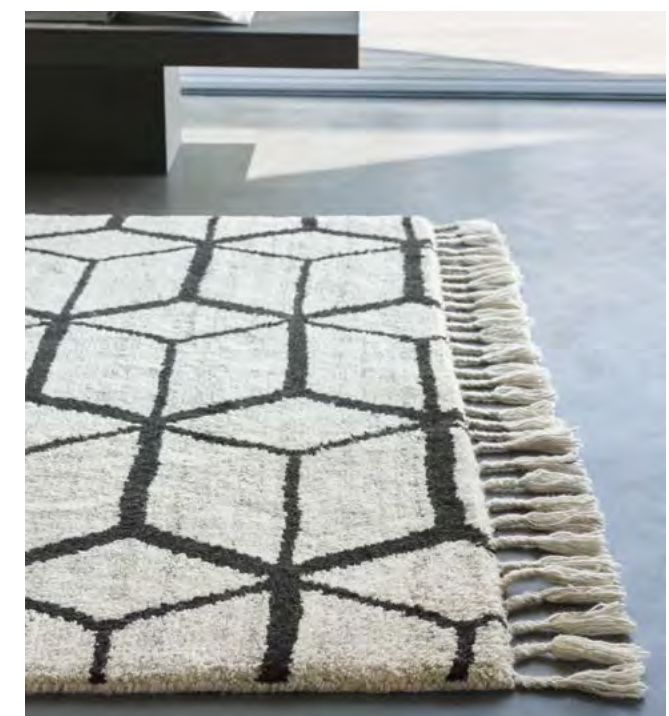
**B&C**

## WHAT'S NEW

2020 | 2021



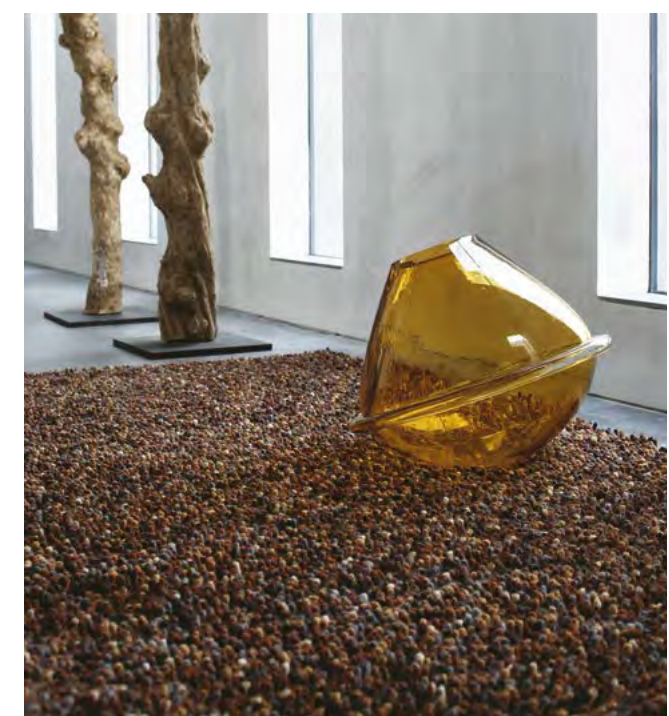
**YOUNG**  
NEW COLLECTION



**ARABISKA**  
ON TREND



**DIVINA**  
TONE-ON-TONE



**REINTRODUCING OUR**  
ALL TIME CLASSIC **ROCKS**



**TUMBLE & GRAIN**  
COMFORTABLE TEXTURES



**TWINSET**  
TUFTED TENCEL™ WOOL



Twinset is available in a plain version or as design: urban, frame or skyline.  
The plain version can be made in either cut or loop pile.  
Design urban frame and skyline are made in cut and loop pile combination.



**TWINSET**  
a uni colour concept  
made in cut and loop pile  
  
available in a plain  
version or as design  
  
made from Tencel™ pure  
new wool



**B&C**



DIVINA

TUFTED TENCEL™ WOOL

Tufted – pure new TENCEL™ wool

total weight ca 3700 gr/m2

pile weight ca 2200 gr/m2

pile height ca 17 mm

available sizes:

140 x 200 cm	4'7" x 6'7"
170 x 240 cm	5'7" x 7'10"
200 x 300 cm	6'7" x 9'8"
250 x 350 cm	8'2" x 11'6"

custom sizes are available



twinset divina

013401



twinset divina

013406



twinset divina

013407





**COBBLE & MARBLE**

a special, handwoven  
looppile quality

tone in tone coloured  
luxurious structures

different sized yarns  
twined together create  
a playful result

**COBBLE & MARBLE**  
PURE NEW WOOL



cobble 29201



cobble 29204



cobble 29206



cobble 29207



cobble 29208

Handwoven – pure new wool  
total weight cobble ca 4000 gr/m2  
pile weight cobble ca 3700 gr/m2  
total weight marble ca 4500 gr/m2  
pile weight marble ca 4200 gr/m2  
no pile due to flatweave structure  
available sizes:  
140 x 200 cm 4'7" x 6'7"  
170 x 240 cm 5'7" x 7'10"  
200 x 300 cm 6'7" x 9'8"  
250 x 350 cm 8'2" x 11'6"  
custom sizes are available



marble 29501



marble 29503



marble 29504



marble 29505



marble 29507



marble 29517



marble 29500





HAVE A LOOK INTO THE WORLD OF

## BRINK&CAMPMAN

Dutch manufacturing company Brink&Campman offers high-quality rugs since 1897. The combination of over a 100 years of experience, craftsmanship and continuous product development results in Brink&Campman being a well-known name worldwide. Modern rugs are made using long-standing crafts as well as the latest tufting techniques in our factory based in Lichtenvoorde, the Netherlands.

### QUALITIES

Throughout the years Brink&Campman specialised in several rug qualities. The variety in our collection results from diversity in techniques being translated in Brink&Campman's own iconic handwriting.

Every quality has its own characteristics, specifications and possibilities. Axminster woven, tufted, handknotted, hand-woven and handtufted are the techniques that we work with.

In addition to our standard size collection we also offer the opportunity to order bespoke sizes in various designs and qualities. Because custom size rugs are made especially for you, lead times may vary from those of standard sizes.

Our sales staff will be pleased to advise you of the possibilities, lead times, costs etc.





B&C

## DESIGN STUDIO BRINK&CAMPMAN

### DESIGN STUDIO

All Brink&Campman rugs originated in the design studio, which we proudly refer to as the heart of our company.

Our designers develop the unique collection range, starting with a nice yarn, inspired by the latest trends or fascinated by technical possibilities.

Therefore a big part of the Brink&Campman collection proudly carries the title 'Made in Holland'. Each fall a new Brink&Campman collection is presented, filled with novelties in several qualities.





**TUMBLE & GRAIN**  
COMFORTABLE TEXTURES

**TUMBLE & GRAIN**

hand woven structures  
with a subtle crafted look

in refined neutral  
colourways

contemporary look  
and feel

**B&C**



TUMBLE & GRAIN  
COMFORTABLE TEXTURES



Handwoven – pure new wool  
total weight tumble ca 2400 gr/m2  
pile weight tumble ca 3700 gr/m2  
total weight grain ca 2200 gr/m2  
pile weight grain ca 4200 gr/m2  
no pile due to flatweave structure  
available sizes:  
140 x 200 cm 4'7" x 6'7"  
160 x 230 cm 5'3" x 7'6"  
200 x 280 cm 6'7" x 9'2"  
250 x 350 cm 8'2" x 11'6"  
custom sizes are available



tumble 013601



tumble 013604



grain 013501



grain 013502



grain 013504



grain 013505



grain 013506



grain 013507







## YOUNG

produced in our own  
factory in the Netherlands

a mix of different yarns  
creating a playful and  
unique look

endless possibilities in  
different sizes & shapes

B&C

## YOUNG PURE NEW WOOL



Tufted- pure new wool  
total weight ca 3900 gr/m2  
pile weight ca 2500 gr/m2  
available sizes:  
140 x 200 cm 4'7" x 6'7"  
160 x 230 cm 5'3" x 7'6"  
200 x 280 cm 6'7" x 9'2"  
250 x 350 cm 8'2" x 11'6"  
custom sizes are available



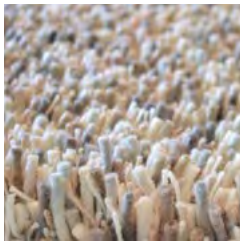
young 061801



young 061802



young 061804



young 061805



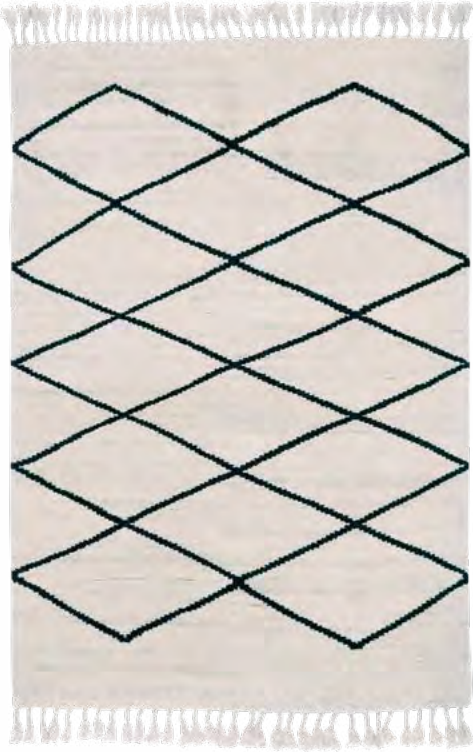
young 061806



young 061807



ARABISKA  
HAND KNOTTED



arabiska moroccan  
063401



arabiska hexacon  
063501



arabiska diamant  
063101



arabiska geometrisk  
063301



arabiska geometrisk  
063305



arabiska marakesh  
063201

Handknotted – pure new wool  
total weight ca 4000 gr/m2  
pile weight ca 3000 gr/m2  
available sizes:  
140 x 200 cm 4'7" x 6'7"  
170 x 230 cm 5'7" x 7'6"  
200 x 300 cm 6'7" x 9'8"  
250 x 350 cm 8'2" x 11'6"  
custom sizes are available

ARABISKA

handmade quality in  
pure new wool  
made in India

various on trend  
designs



B&C



## ROCKS

anti-static, sound dampening,  
comfortable, suitable for  
floor heating,  
permeable to warmth,  
insulating, attractive,  
& fire retardant.

made from natural  
materials and also  
produced ecologically.

B&C

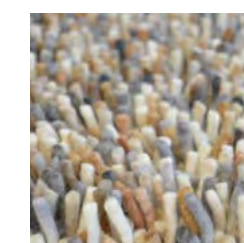
## ROCKS REINTRODUCING A CLASSIC



axminster woven – pure new wool  
total weight ca 5500 gr/m2  
pile weight ca 4000 gr/m2  
pile height ca 20/50 mm  
available sizes:  
140 x 200 cm 4'7" x 6'7"  
170 x 240 cm 5'7" x 7'10"  
200 x 300 cm 6'7" x 9'8"  
250 x 300 cm 8'2" x 9'8"  
250 x 350 cm 8'2" x 11'6"  
custom sizes are available



rocks 70401



rocks 70501



rocks 70504



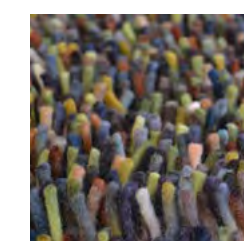
rocks 70411



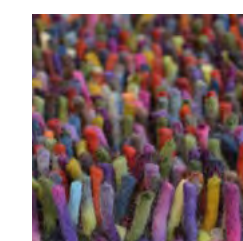
rocks 70213



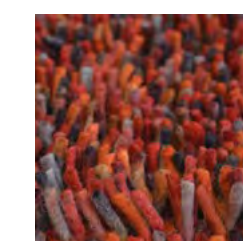
rocks 70405



rocks 70407



rocks 70415



rocks 70503



rocks 70515



## TED BAKER

a mixture of richly hued  
contemporary designs

handtufted in pure new  
wool or combined with  
lustrous viscose  
with a low-cut or loop pile

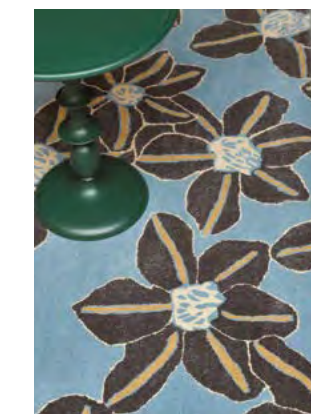
## ZODIAC RUGS

New in our Ted Baker  
rug collection are our fun  
and quirky zodiac gift able.

These beautiful design in-  
terpretations of each zodiac  
sign are available in 100cm  
and 200cm rounds.

Nice to complement each  
nursery and kids playroom  
or simply to use as wall-art.

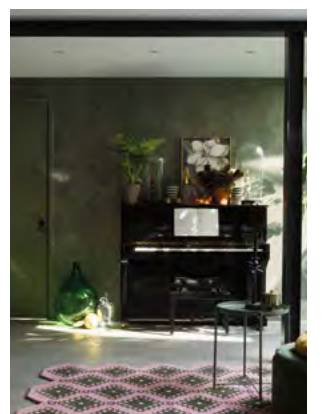
## TED BAKER NEW COLLECTION



Zakouma light blue  
160608



Zodiac  
Libra & Cancer



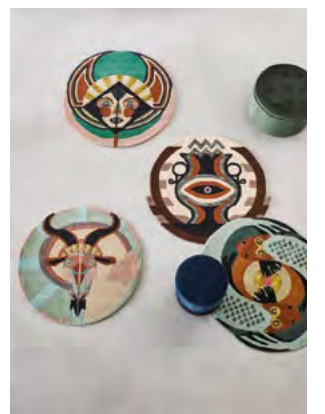
Ivory pink  
160702



Masquerade pink  
160002



Ivory Atlas round  
160205



Zodiac Capricorn, Virgo  
Aquarius & Pisces



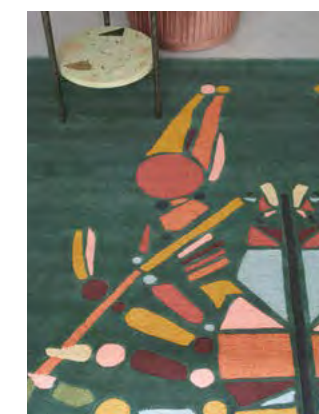
Zodiac  
Gemini, Taurus & Aries



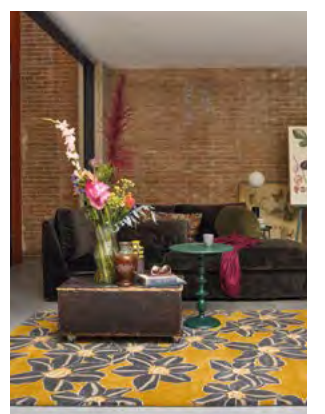
Opal grey  
53704



Zodiac  
Scorpio & Sagittarius



Emerging Lobster green  
160407



Zakouma ochre  
160606



Jardin pink  
160902



Zodiac  
Leo



Emerging Fish burgundy  
160500



Saffron pink  
160802



Saffron red  
160800



# SCION NEW COLLECTION



Kelda Kobalt  
023508



Pedro Dandelion  
023406



Uteki Slate  
023604



Padukka Twilight  
023208



Parwa Chalky Brights  
026300



Parwa Dusky hues  
026308



Epsilon Charcoal  
023801



Composition Papaya  
023706



Esala Tropicana  
026505



Oxalis Juniper  
025507

## SCION

a stylish and  
imaginative collection  
of hand-tufted rugs has  
been created to  
complement Scion's  
playful fabrics and  
wallpapers.  
Combining bold  
contemporary colour  
with powerful graphic  
motifs.



B&C



## HARLEQUIN

fashionable rugs which  
have been adapted from  
Harlequin's  
best-selling designs

eye-catching wool rugs,  
handtufted with  
luxurious textures

a stylish statement in  
your home

## HARLEQUIN NEW COLLECTION



Elwana Jute  
140208



Rosita Putty  
140404



Elliptic Emerald  
140307



Mehari Lime  
140107



Mehari Maize  
140101



Rosita Harissa  
140402



Diffinity Oyster  
140001



Thyphonic Onyx  
140505

B&C



# SUSTAINABILITY

## BRINK&CAMPMAN

### FOOTPRINT

Wool is a naturally durable fibre and products from wool can stay in circulation for a relatively long period of time, reducing their environmental footprint.

Research has established that woollen products have the potential for several ‘lives’ over 20-30 years.

Therefore wool is one of the world’s most suitable fibres for reuse.

### DID YOU KNOW THAT WOOL IS A 100% RECYCLABLE MATERIAL?

Wool is, just like human hair, made out of keratin. When buried in soil it will naturally decompose. It will through time, in a matter of months or years, slowly decompose and releases valuable nutrients back into the earth. The grass that will grow out of that soil will be eaten by sheep, those sheep produce the wool that we use for our rugs.

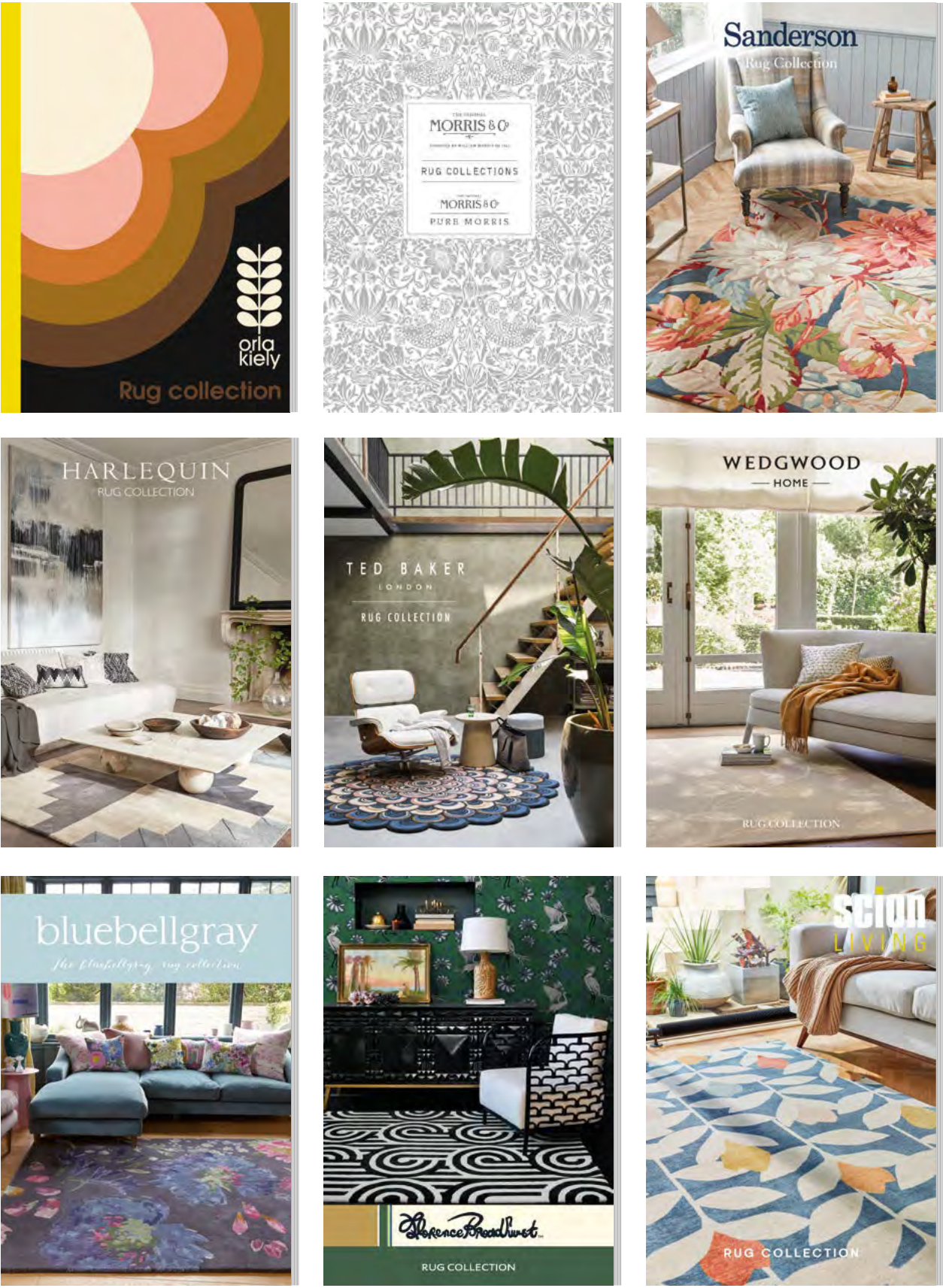
A circular recycling system that makes our woollen rugs sustainable.

### BRAND COLLECTION

Have a look at our other designer brands.

Our design studio develops and we manufacture licensed collections for these prominent brand names from the international home interior and fashion world.

please have a look at  
**brinkandcampman.com**



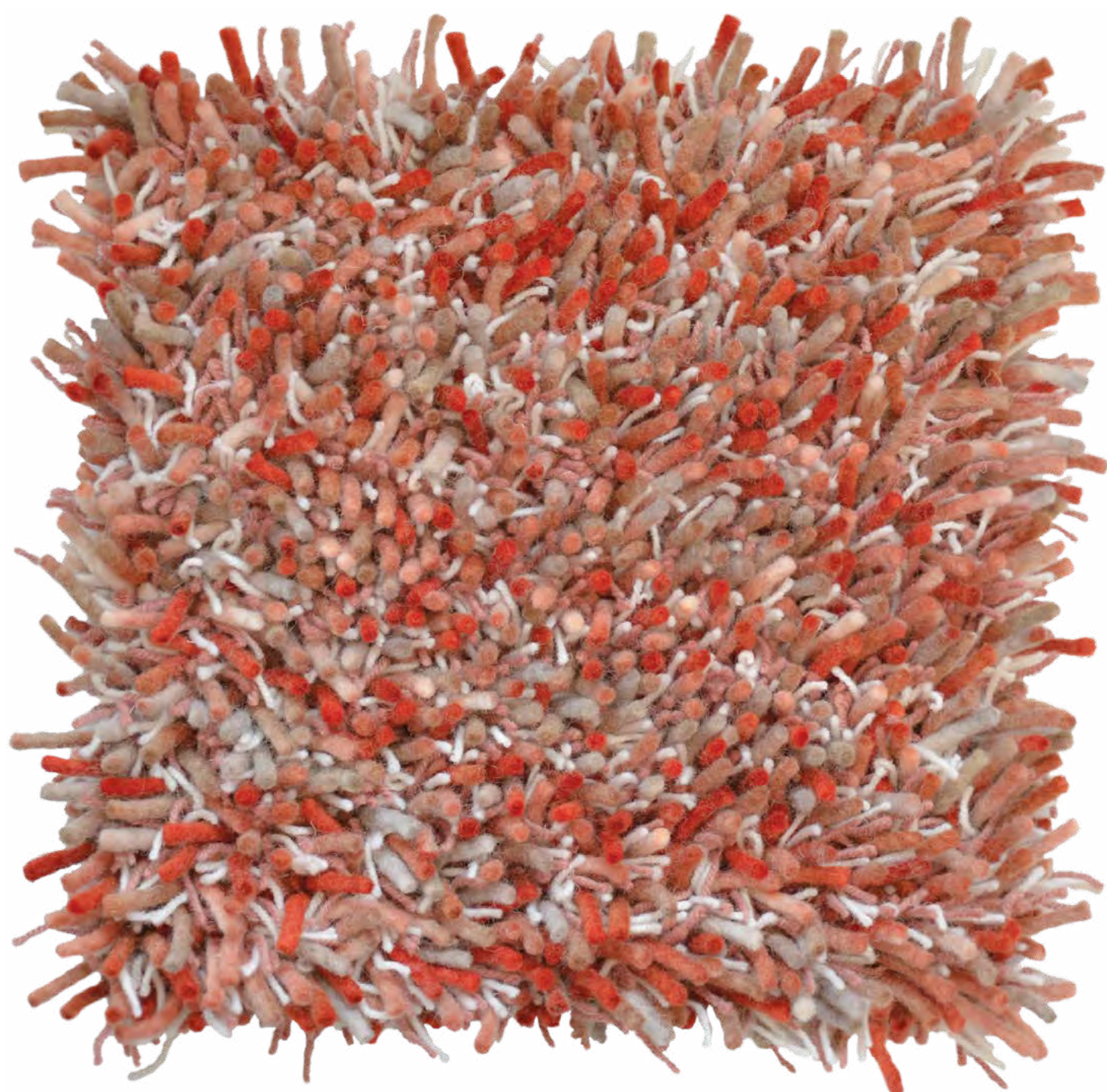
- COLOFON**
- editorial**  
Brink&Campman
- collection design**  
Brink&Campman
- photography**  
Alexander van Berge  
Brink&Campman
- styling**  
Bregje Nix
- graphic design**  
Brink&Campman
- prepress**  
Graphic Motions
- print**  
SMG groep
- special thanks to**  
www.hkliving.nl  
www.polspotten.nl  
www.covanderhorst.nl

All rights are reserved. No part of this publication may be reproduced or transmitted in any form or by any means, electronic or mechanical including photo-copying, recording or any information storage or retrieval system without the express prior written consent of the publisher.

©2020 Brink&Campman







FOR MORE INSPIRATION FIND US AT

**[brinkandcampman.com](http://brinkandcampman.com)**



**B&C**